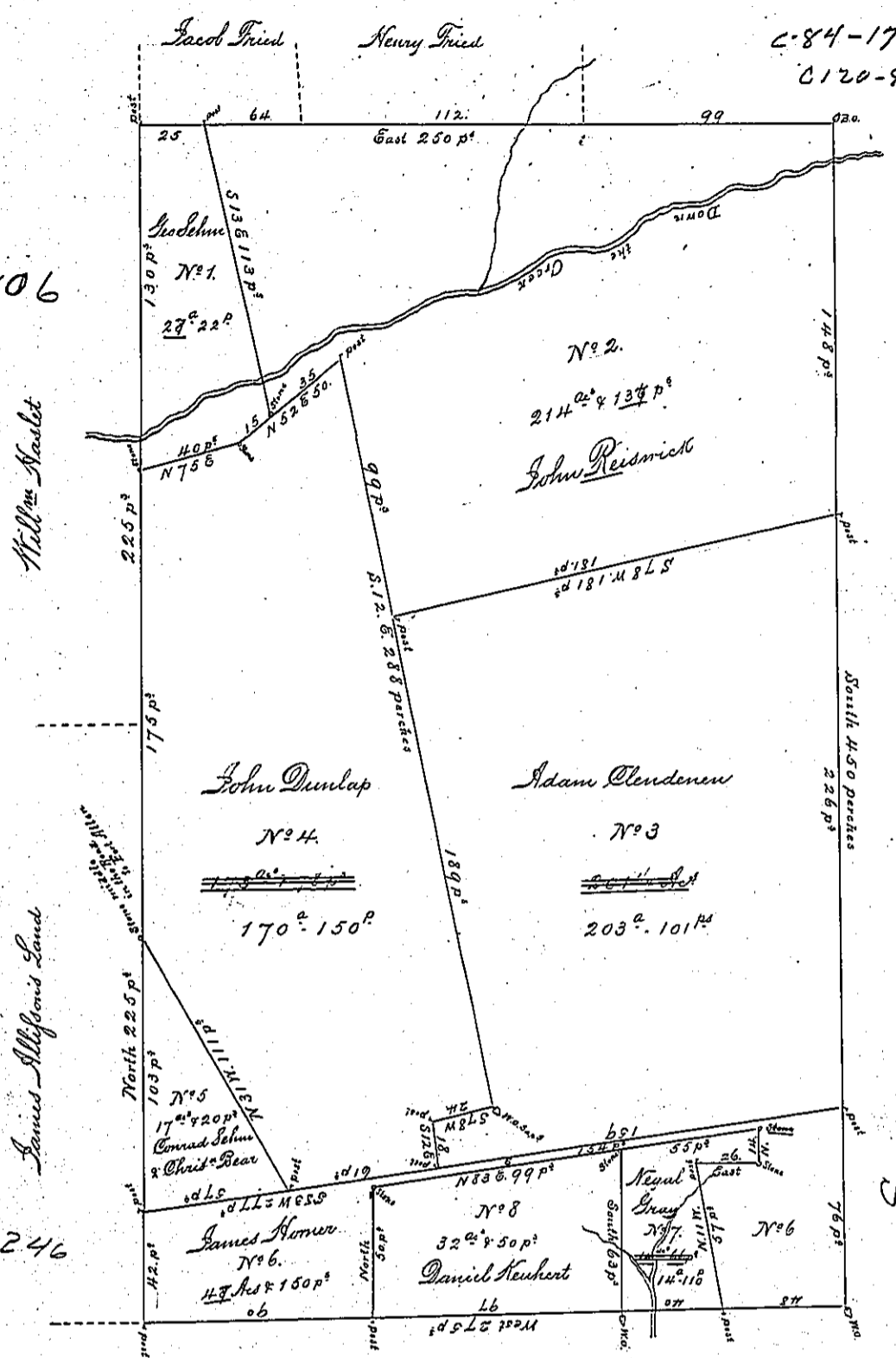


a-64-106

C-105-205

A-51-246



C-84-17.
C120-94

C-20

In the opposite Draught the sundry Pieces contain viz:

George Schum	N ^o 1.	contains	28 Acres & 22 perches & Allowance
John Reismick	N ^o 2.	214	8137 D ^o & D ^o
Adam Clendenen	N ^o 3.	203	8101 D ^o & D ^o
John Dunlap	N ^o 4.	170	8150 D ^o & D ^o
Conrad Schum & Christ ^l Bear	N ^o 5.	17	820 D ^o & D ^o
James Horner	N ^o 6.	47	8150 D ^o & D ^o
Negal Gray	N ^o 7.	14	8110 D ^o & D ^o
Daniel Keubert	N ^o 8.	32	850 D ^o & D ^o
Suma		729 Acres & 100 perches	

& the usual Allowance @ 6 p^{er} C^h

IN TESTIMONY that the above is a copy of the original remaining on file in the Department of Internal Affairs of Pennsylvania, made conformably to an Act of Assembly approved the 16th day of February, 1833, I have hereunto set my hand and caused the Seal of said Department to be affixed at Harrisburg, this

second day of February 1897

James W. Latta
Secretary of Internal Affairs